



# THE SHOPHOUSES

## CONSTRUCTION

MARCH 2020

### Project Overview

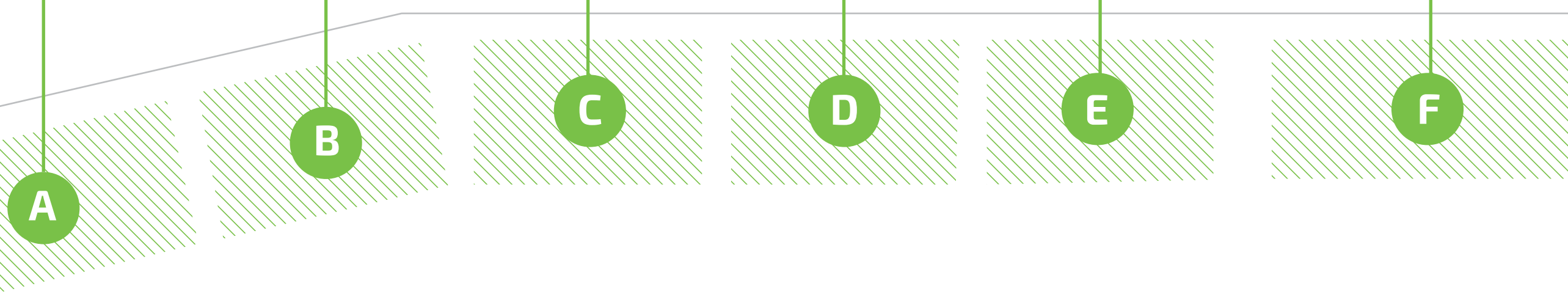
-

The Shophouses are located at Urbanland Asia's KMH Park development situated on Veng Sreng Blvd. The project will also include their new 3 storey K Mall, office tower, and football field.

Since the project started, the progress, installation and quality are intensively under controlled inline with the company vision.



### Master Plan



### Work In Progress



#### BLOCK - A

Works has begun on the second floor. Columns have been erected throughout the second floor to support the reinforced concrete slab. MEP provision is currently in progress on Mezzanine floor.



#### BLOCK - B

After erecting the first floor slab formwork, we are now reinforcing the first floor beams and slabs.



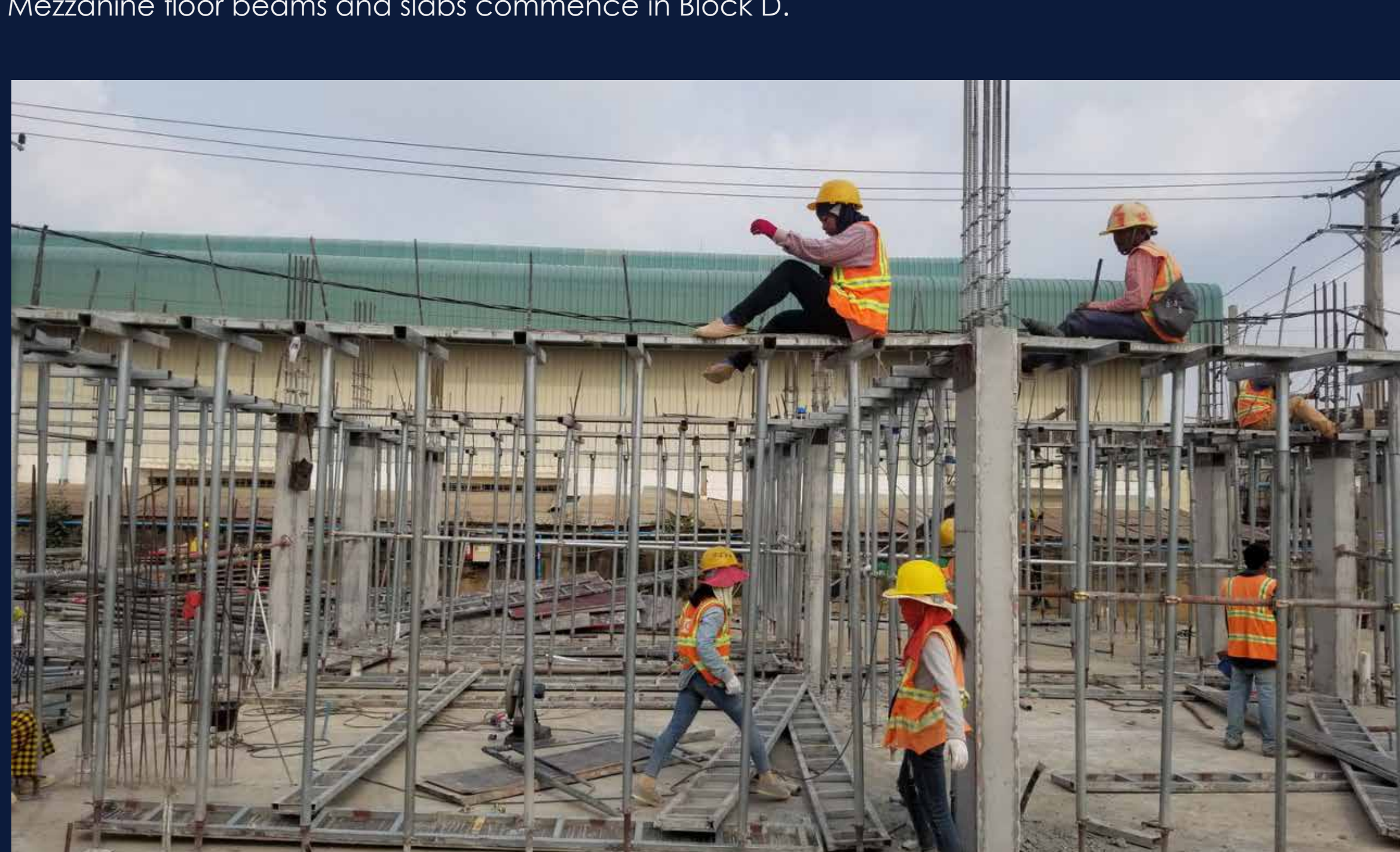
#### BLOCK - C

Works is starting on the first floor. Column rods are erected throughout the first floor with MEP provision in progress on ground floor.



#### BLOCK - D & E

Column works are completed on the mezzanine floor in blocks D & E. Mezzanine floor beams and slabs commence in Block D.



#### BLOCK - F

Concrete slab on the ground floor is complete. Placement of rebar in footings is in progress.

